



Better Pumps. Better Coverage.

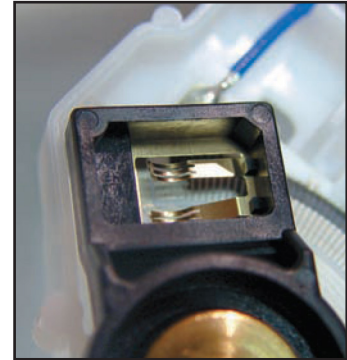
Fuel Pump Float Arm Assembly Technical Service Bulletin

The Problem:

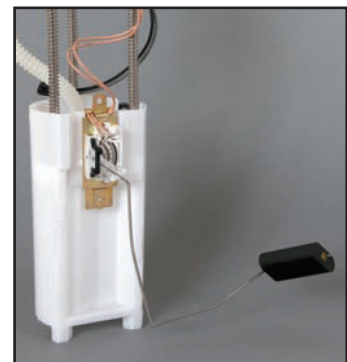
In some cases, float arm assemblies have been damaged after the Airtex fuel pump is tested. Shipping, mishandling, and pump insertion/removal from packaging are causes for potential damage.

The Solution:

The float arm is shipped loose to avoid unnecessary damage and disruption during installation. The undamaged Airtex float arm assembly should be properly mounted to the fuel level sender before installing the pump module into the fuel tank.



Bent Electrical Contact



Bent Float Arm



Detached Sender





Better Pumps. Better Coverage.

Fuel Pump Float Arm Assembly - Technical Service Bulletin

Float Arm Installation:

NOTICE: Handle the fuel pump module, fuel level sender, and float arm assembly carefully. Any damage, bending or distortion will adversely affect the accuracy of the fuel level readings.

Identify Components:

The following components will be referenced during the assembly process (Figure 1):

1. Fuel pump module
2. Fuel level sender
3. Pivot hole
4. Float arm assembly
5. Float arm retaining clip

Assemble Float Arm:

1. Insert the float arm into the pivot hole of the fuel level sender (Figure 2).
2. Carefully push on the float arm until it snaps into the fuel level sender. The float arm will now be in place (Figure 3).

Install Float Arm Retaining Clip:

Position the float arm retaining clip over the float arm as shown (Figure 4) and push it into the fuel level sender housing until it snaps into place (Figure 5).

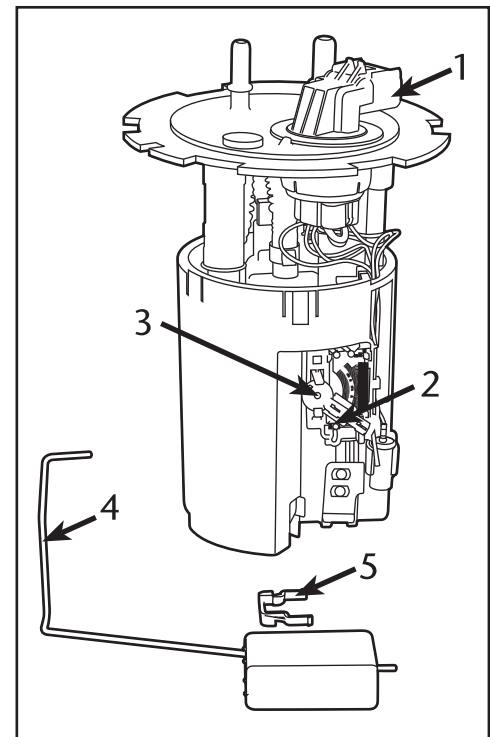


Figure 1

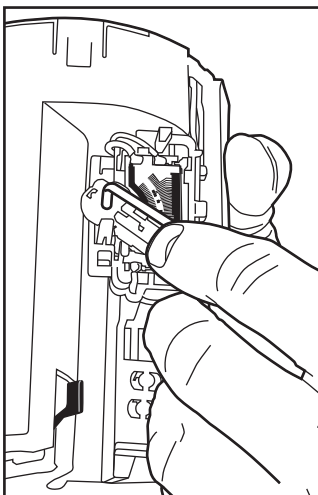


Figure 2

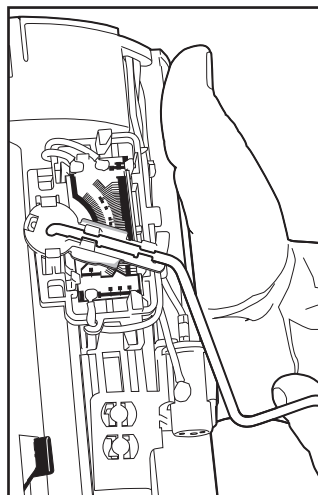


Figure 3

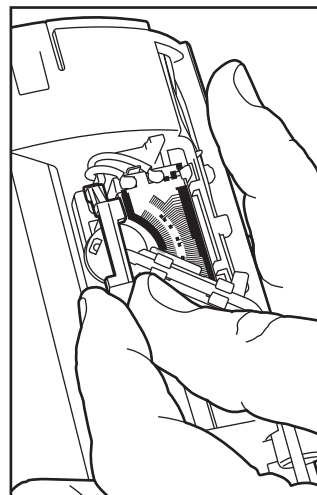


Figure 4

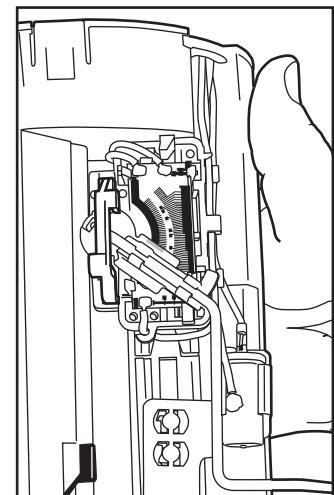


Figure 5

